

Website : www.medical-developpement.com

Very large treadmills : S3040
Very large Running area 3m/4m
Speed : 0 à 60 km/h ; Slope : - 10% à + 25%



S3040 treadmill developed and manufactured for Japan Institute of Sport Sciences (JISS) – TOKYO

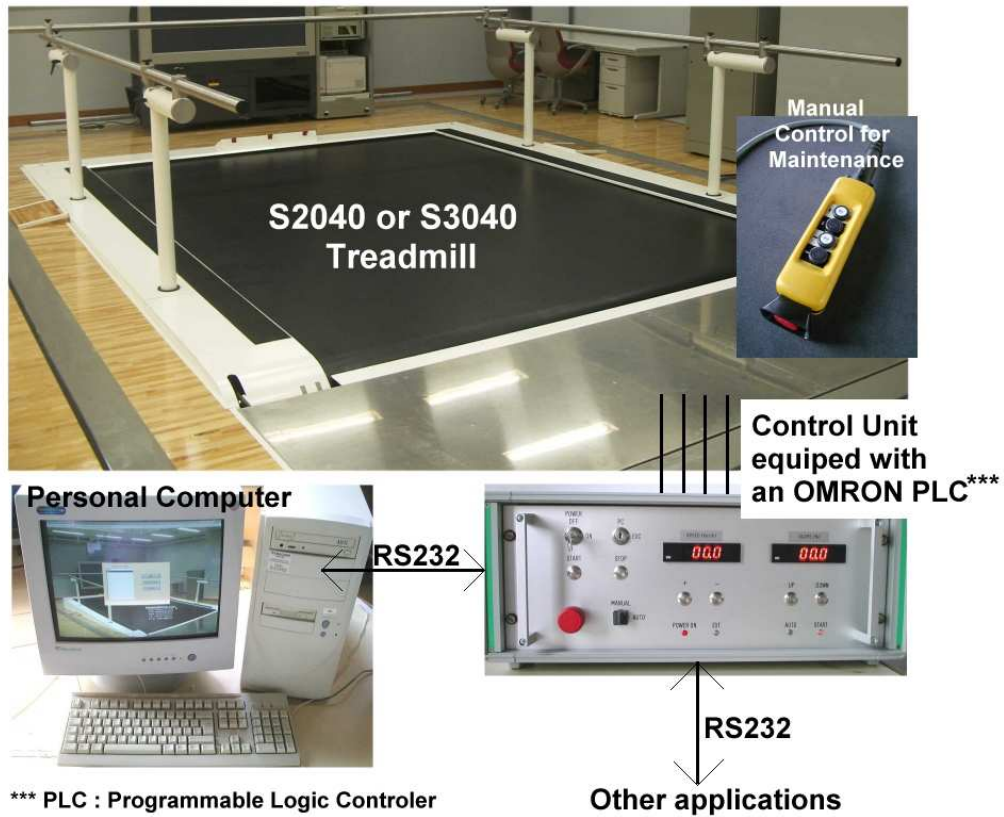
Any kinds of studies :

- Principally dedicated for running applications with several sportsmen simultaneously on the treadmill, (up to 7 sportsmen), speed range : 2 to 30 km/h
- Dedicated to very high speeds (30 to 60 Km/h) : roller skiing, rollers, wheelchair, ...
- Option available for intensive use with bicycle
- Very large running area : up to 3 m * 4m
- Very high speed : up to 60 km/h
- Adjustable slope : - 10 % to 25 %
- Other specifications on request

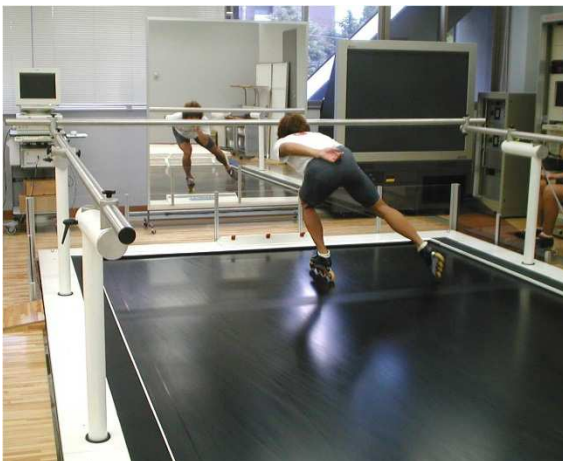
The treadmill can be controlled in manual mode or in automatic mode with a software installed on a computer.

It can be also controlled by other external equipment (ECG or gas analyser) (RS 232 connection, Trackmaster TM 400 protocol).

Manufactured on request



Example: S3040 developed for Japan Institute of Sport Sciences (JISS) in Tokyo





S3040 installation in Tokyo

