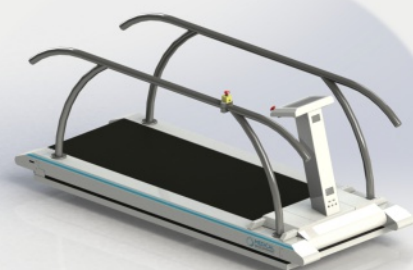


Medical-sport treadmill **Eos**



Eos

Medical - sport treadmill

Medical professional use and for high-level athletes

The EOS treadmill is configurable, in order to respond as well as possible to your needs, by choosing the type of use, the dimensions, the slope, the speed, ...

Polyvalent and robust, different activities are possible, like walking, running, bicycling and the use of a wheelchair.

The activities are managed with a complete and intuitive interface.

Advanced technical design, inducing a very low noise level and a reduced maintenance is used.

Medical use

The medical approach is the focus of **Eos** treadmill conception.

With it's different configurations, it will be able to respond all your needs:

- | **Rehabilitation** : result of an injury, operation and/or prosthesis of the lower limbs.
- | **Geriatrics** : in order to create a walking simulation, on level ground, uphill and downhill.
- | **Pediatrics** : choosing adjustable safety guards in high and width, the Eos treadmill is usable by children.
- | **Cardio-respiratory exercises** : treadmill adjustable speed, depending to the cardiac rhythm.

Sporting use

The different configurations of the Eos treadmill allow to adapt to your most challenging sporting needs.

- | **Performances** : large speed range, until 60 km/h, reversible, with the possibility to be driven by the sportsman footstep or cardiac rhythm.
- | **Usable surface** : maximum of 3x1 m; these big dimensions are appreciated by the high level athletes.
- | **Training sequences** : configurable, with the possibility to use a virtual track with slopes from -30% to +30%.
- | **Cardiovascular work** : the treadmill adapts its speed to the user cardiac rhythm.

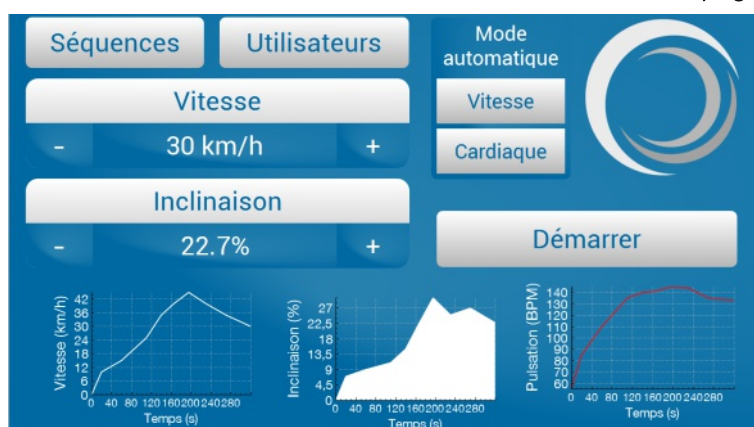


Dialogue

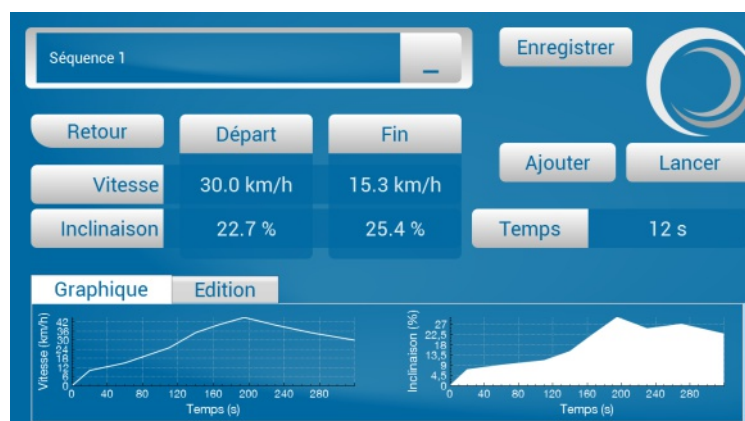
A control panel, with an intuitive interface, via a touchpad, allows using all functionalities of the Eos treadmill. Depending of the treadmill use, the control panel may be placed at the end of the treadmill or at its side. It is equipped with RS-232 and Ethernet connectors.



Main page



Sequences page



Model

The Eos medical - sport treadmill is mainly designed for two types of use: medical and sport.
We offer a "Medical" version, respecting the standards of this field, and a "Sport" version.

Use

Depending on the practiced activities and for a better user comfort, two types of bearing surfaces are offer:

- more flexibility for walking and running,
- more reactive surface, for biking and use of a wheelchair.

Both types of surface are also adapted for the each other activities.



Dimensions

Listening the requirements of our customer, we offer a wide panel of dimensions, in length and width. Combine the different dimensions, according to your needs.



Treadmill usable area with a length (A) 1750 x (B) 500	750	Dimensions (C x D) 2316 x 897	Width (E) 670
	1000		
Treadmill usable area with a length (A) 2000 x (B) 500	750	Dimensions (C x D) 2566 x 897	Width (E) 670
	1000		
Treadmill usable area with a length (A) 2500 x (B) 500	750	Dimensions (C x D) 3066 x 897	Width (E) 670
	1000		
Treadmill usable area with a length (A) 3000 x (B) 500	750	Dimensions (C x D) 3566 x 897	Width (E) 670
	1000		

Rolling surface height (F) : 243

Safety-guards height (G) : 1087

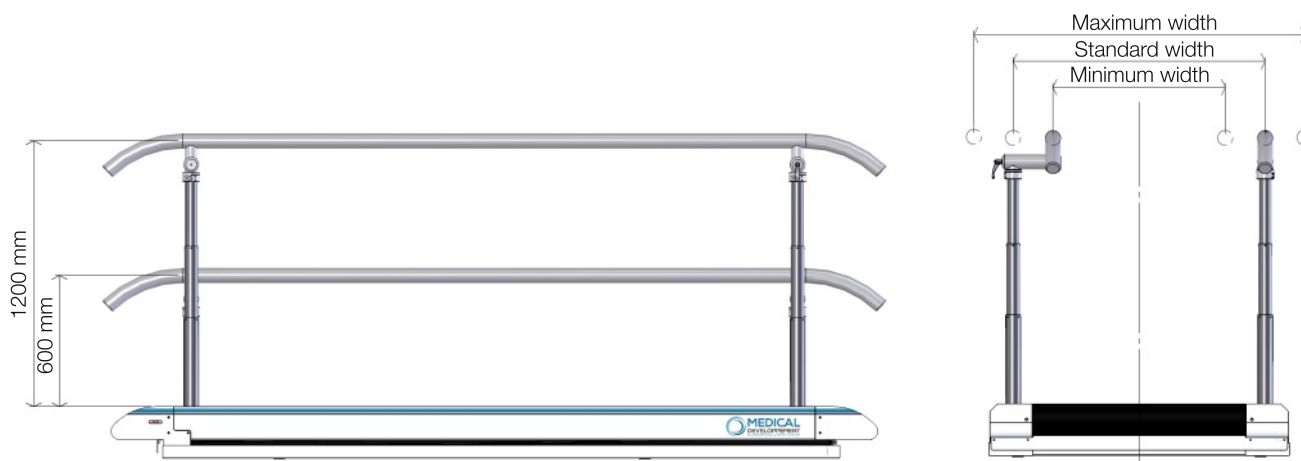
Treadmill total height (H) : 1330

Dimensions are written in millimeters (mm)

Adjustable safety-guards

With the aim of making the Eos treadmill usable by the highest number, we offer adjustable in height safety-guards, manually or electrically. Thus, the treadmill is also suitable for children. The adjustment range in height varies from 600 mm to 1200 mm for the highest position.

A manual adjustment of the width between the safety-guards, allowing shrinkage or widening until 370 mm is also proposed.



Standard width : treadmill width + 170

Minimum width : treadmill width - 200

Maximum width : treadmill width + 540

Dimensions are written in millimeters (mm)

Hanging bar

In order to improve the user security, mainly with high speed use, an hanging bar overhangs the treadmill. An harness (supplied), is hanged to the hanging bar and directly linked to an emergency stop, preventing a loss of balance or a fall, by stopping the treadmill.

The hanging bar is required to practice bicycling.



Control panel

The control panel, with its intuitive interface, via a tactile screen, allows using all the possibilities of the treadmill. Depending on the use of the treadmill, the control panel can be fixed to the frame, or placed beside the treadmill.



Touchpad

A remote control, as a 7" touchpad, allows controlling and visualizing the Eos treadmill data. This can be fixed to the safety guards or directly used by the practitioner.



Speed

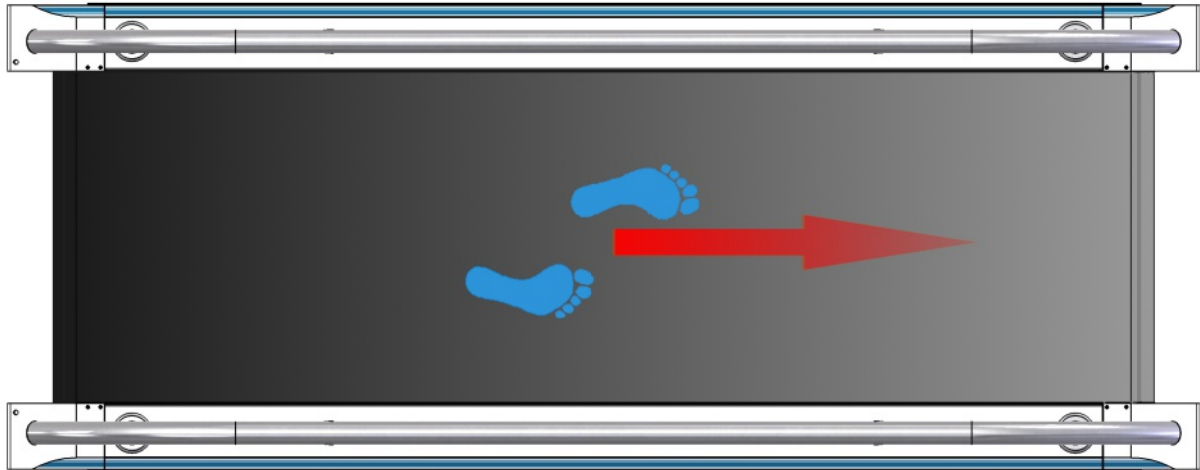
The speed can be adjusted manually by the user, or directly driven by the program or the servo-control, from 0 km/h (0 mph) to the maximum speed, in both rotating directions.

Depending on the use, choose the maximal speed of the treadmill. 3 speeds are available:

- | 25 km/h (15 mph), suitable for walking, running, use of a wheelchair;
- | 40 km/h (25 mph), idem to the 1st, but also adapted for bicycling (hanging bar required);
- | 60 km/h (37 mph), idem to the 1st, but also adapted for high speed bicycling (hanging bar required).

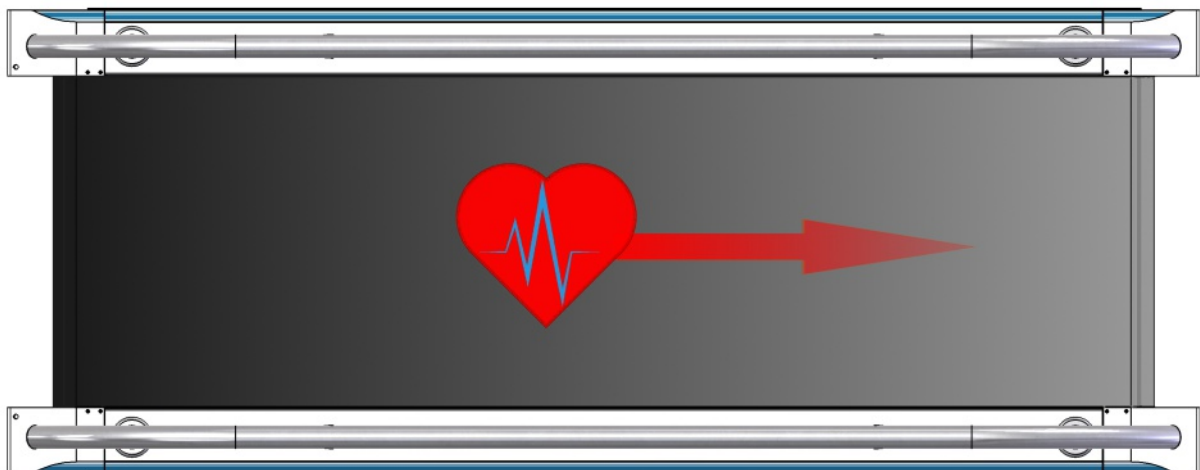
Speed loop

To determine the position of the user or its COP (Center Of Pressure), 4 force sensors are measuring during the use. The treadmill will adapt its speed, according to the user footstep (length and speed).



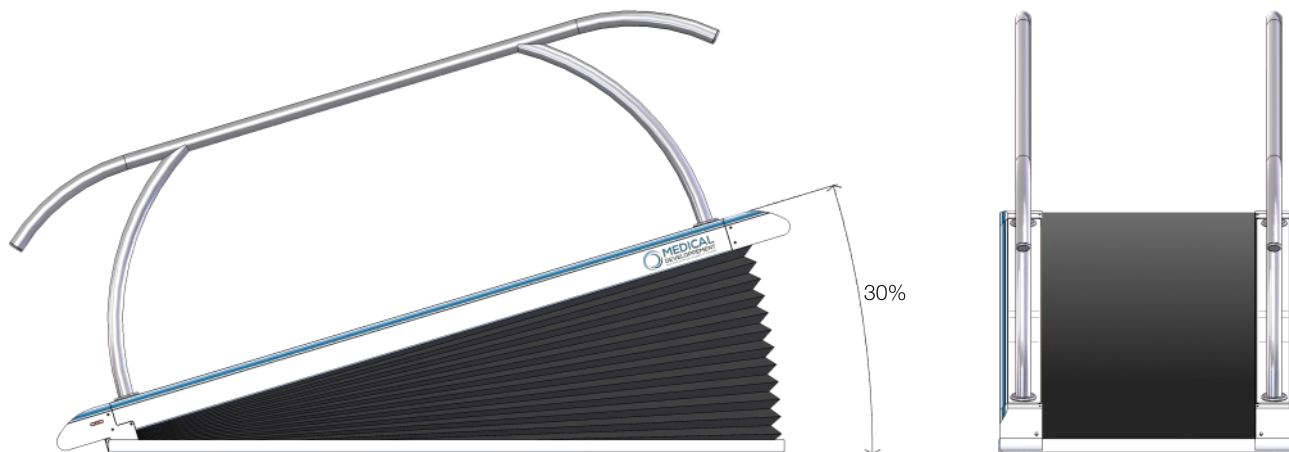
Cardiac loop

Directly linked to a Polar® H7 heart rate sensor (supplied), the treadmill will adapt its speed to the user cardiac frequency.



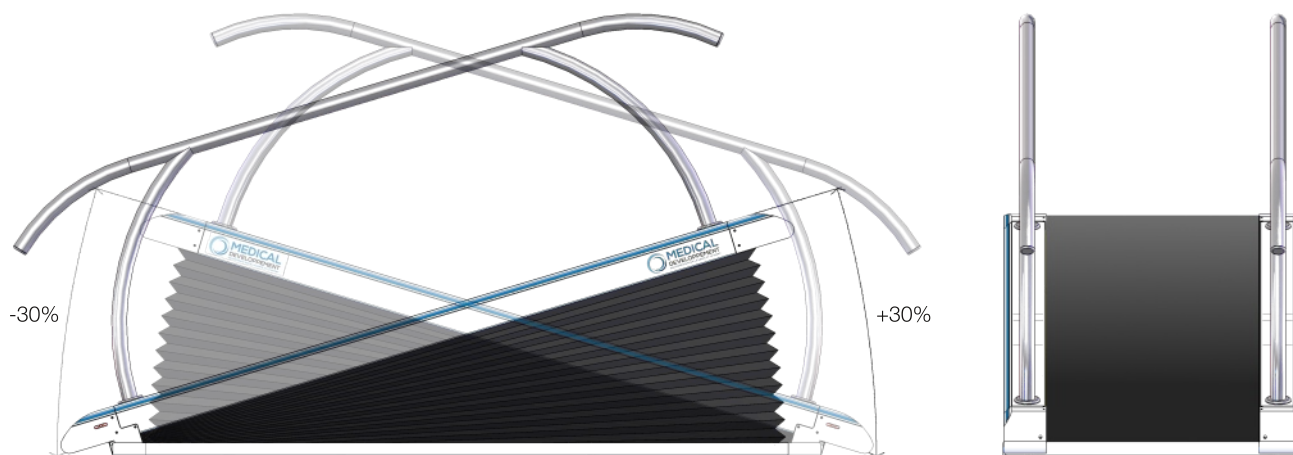
Positive slope

To simulate drops, we offer a model with an adjustable slope, up to 30%.
Due to the rotation reversibility of the treadmill, it is possible to reproduce uphill and downhill motion.
The slope varies dynamically, according to the activity sequence.



Positive and negative slope

In order to use a virtual training track and specific physical tests, we offer a model with an adjustable slope, from -30% up to 30%.
The programmed track, viewable on the control panel, varies the slope of the treadmill, during its progress.



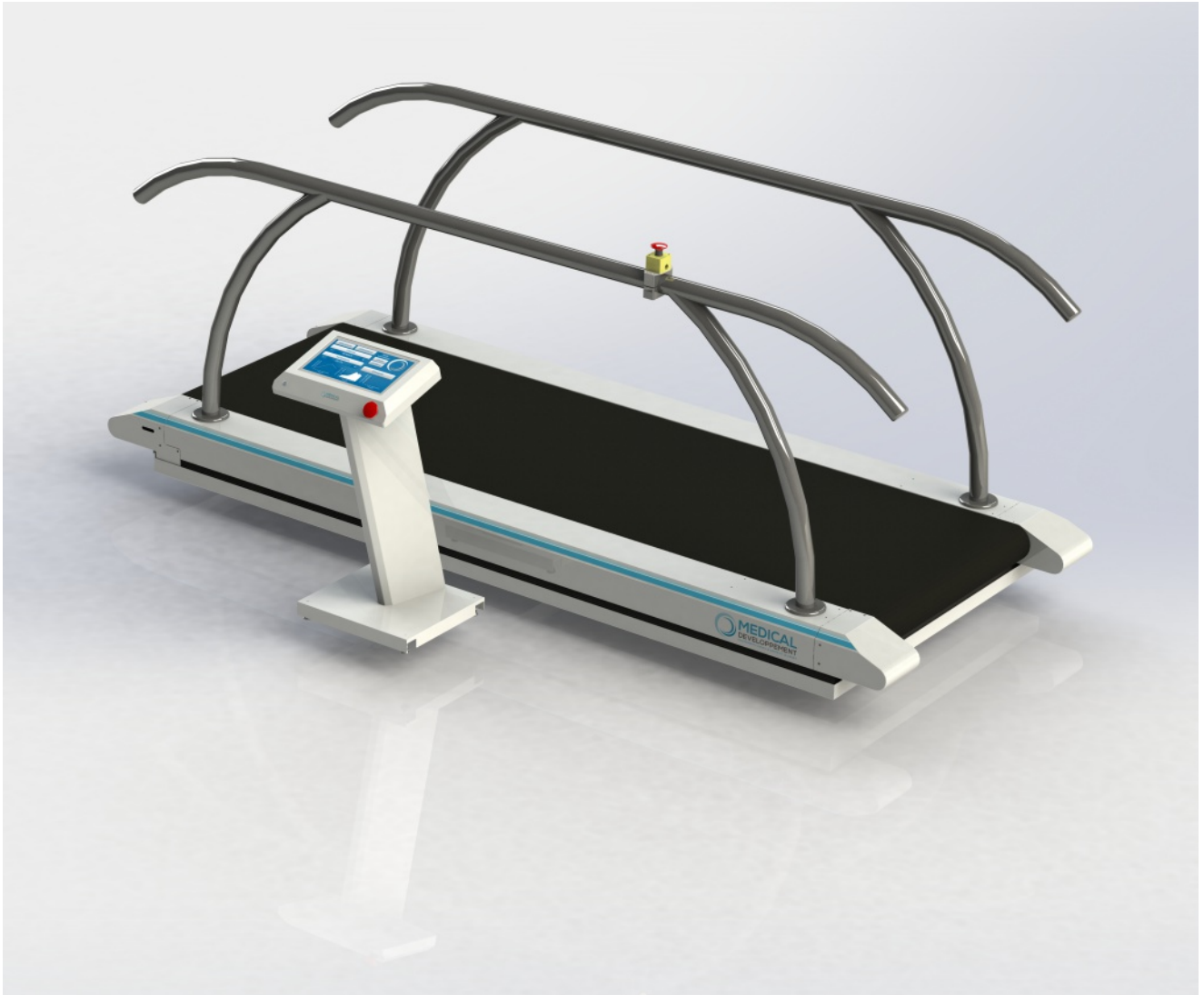
Configure your **Eos** treadmill as you like, depending of the different possibilities, described on the previous pages.

Eos																																																																																																								
Product	Model	Use	Length	Width	Safety guards height	Safety guards width	Hanging bar	Control panel	Touchpad	Speed	Speed loop	Cardiac loop	Slope	Power supply (not required to order)																																																																																										
	<table border="1"> <tr><td>Model</td><td>Code</td></tr> <tr><td>Medical</td><td>M</td></tr> <tr><td>Sport</td><td>S</td></tr> </table>	Model	Code	Medical	M	Sport	S	<table border="1"> <tr><td>Use</td><td>Code</td></tr> <tr><td>Walking Running</td><td>P</td></tr> <tr><td>Bicycle Wheelchair</td><td>R</td></tr> </table>	Use	Code	Walking Running	P	Bicycle Wheelchair	R	<table border="1"> <tr><td>Length</td><td>Code</td></tr> <tr><td>1750 mm</td><td>1750</td></tr> <tr><td>2000 mm</td><td>2000</td></tr> <tr><td>2500 mm</td><td>2500</td></tr> <tr><td>3000 mm</td><td>3000</td></tr> </table>	Length	Code	1750 mm	1750	2000 mm	2000	2500 mm	2500	3000 mm	3000	<table border="1"> <tr><td>Width</td><td>Code</td></tr> <tr><td>500 mm</td><td>500</td></tr> <tr><td>750 mm</td><td>750</td></tr> <tr><td>1000 mm</td><td>1000</td></tr> </table>	Width	Code	500 mm	500	750 mm	750	1000 mm	1000	<table border="1"> <tr><td>Safety-guard height</td><td>Code</td></tr> <tr><td>Fixed</td><td>F</td></tr> <tr><td>Manual adjustment</td><td>M</td></tr> <tr><td>Electrical adjustment</td><td>E</td></tr> </table>	Safety-guard height	Code	Fixed	F	Manual adjustment	M	Electrical adjustment	E	<table border="1"> <tr><td>Safety-guard width</td><td>Code</td></tr> <tr><td>Fixes</td><td>F</td></tr> <tr><td>Adjustable</td><td>R</td></tr> </table>	Safety-guard width	Code	Fixes	F	Adjustable	R	<table border="1"> <tr><td>Hanging bar</td><td>Code</td></tr> <tr><td>Without</td><td>S</td></tr> <tr><td>With</td><td>A</td></tr> </table>	Hanging bar	Code	Without	S	With	A	<table border="1"> <tr><td>Control panel</td><td>Code</td></tr> <tr><td>Movable</td><td>P</td></tr> <tr><td>Fixed</td><td>F</td></tr> </table>	Control panel	Code	Movable	P	Fixed	F	<table border="1"> <tr><td>Touchpad</td><td>Code</td></tr> <tr><td>Without</td><td>S</td></tr> <tr><td>With</td><td>T</td></tr> </table>	Touchpad	Code	Without	S	With	T	<table border="1"> <tr><td>Speed</td><td>Code</td></tr> <tr><td>25 km/h</td><td>25</td></tr> <tr><td>40 km/h *</td><td>40</td></tr> <tr><td>60 km/h *</td><td>60</td></tr> </table>	Speed	Code	25 km/h	25	40 km/h *	40	60 km/h *	60	<table border="1"> <tr><td>Speed loop</td><td>Code</td></tr> <tr><td>Without</td><td>S</td></tr> <tr><td>With</td><td>V</td></tr> </table>	Speed loop	Code	Without	S	With	V	<table border="1"> <tr><td>Cardiac loop</td><td>Code</td></tr> <tr><td>Without</td><td>S</td></tr> <tr><td>With</td><td>C</td></tr> </table>	Cardiac loop	Code	Without	S	With	C	<table border="1"> <tr><td>Slope</td><td>Code</td></tr> <tr><td>Without</td><td>S</td></tr> <tr><td>Positive</td><td>P</td></tr> <tr><td>Négative / positive</td><td>Q</td></tr> </table>	Slope	Code	Without	S	Positive	P	Négative / positive	Q	
Model	Code																																																																																																							
Medical	M																																																																																																							
Sport	S																																																																																																							
Use	Code																																																																																																							
Walking Running	P																																																																																																							
Bicycle Wheelchair	R																																																																																																							
Length	Code																																																																																																							
1750 mm	1750																																																																																																							
2000 mm	2000																																																																																																							
2500 mm	2500																																																																																																							
3000 mm	3000																																																																																																							
Width	Code																																																																																																							
500 mm	500																																																																																																							
750 mm	750																																																																																																							
1000 mm	1000																																																																																																							
Safety-guard height	Code																																																																																																							
Fixed	F																																																																																																							
Manual adjustment	M																																																																																																							
Electrical adjustment	E																																																																																																							
Safety-guard width	Code																																																																																																							
Fixes	F																																																																																																							
Adjustable	R																																																																																																							
Hanging bar	Code																																																																																																							
Without	S																																																																																																							
With	A																																																																																																							
Control panel	Code																																																																																																							
Movable	P																																																																																																							
Fixed	F																																																																																																							
Touchpad	Code																																																																																																							
Without	S																																																																																																							
With	T																																																																																																							
Speed	Code																																																																																																							
25 km/h	25																																																																																																							
40 km/h *	40																																																																																																							
60 km/h *	60																																																																																																							
Speed loop	Code																																																																																																							
Without	S																																																																																																							
With	V																																																																																																							
Cardiac loop	Code																																																																																																							
Without	S																																																																																																							
With	C																																																																																																							
Slope	Code																																																																																																							
Without	S																																																																																																							
Positive	P																																																																																																							
Négative / positive	Q																																																																																																							

* : Hanging bar option required

Eos treadmill technical specifications

Use :	Rehabilitation, medical and sports research, sportive training, performances medical follow-up.		
Activities :	Running, walking, bicycling, wheelchair.		
User weight :	Maximum 200 kg.		
Dimensions :	Treadmill length :	1750 , 2000 , 2500 , 3000 mm.	
	Total length :	2316 , 2566 , 3066 , 3566 mm.	
	Treadmill width :	500 , 750 , 1000 mm.	
	Total width :	897 , 1147 , 1397 mm.	
	Treadmill height :	243 mm.	
	Total height :	1330 mm.	
	Safety guard diameter :	70 mm.	
Weight :	Depending on dimensions and configuration. Minimum 250 kg, maximum 750 kg.		
Color :	White (RAL 9010). Other colors on demand.		
Speed :	From 0 to 25 km/h, configurable to 40 and 60 km/h, reversible. (From 0 to 15 mph, configurable to 25 and 37 mph, reversible.		
Acceleration :	20 (km/h)/s ; (5,55 m/s²)		
Direction :	Treadmill reversible rotating direction , for the use in both directions.		
Slope :	Horizontal, adjustment option from 0° to 30° and from -30° to 0°, reversing the treadmill rotating direction or possible to adjust from -30° to +30°.		
Power supply :	230 VAC/N/PE, 50-60 Hz. Input fuses : 16A. 3 x 400 VAC/N/PE, 50-60 Hz. Input fuses : 16A.		
Motorization :	Brushless motor, controlled by a frequency converter.		
Protection rating :	IP 20		
Leakage current :	Medical : < 0,5 mA		
Ambiance :	Temperature :	from 10°C to 40°C.	
	Humidity :	from 30% to 75%.	
	Maximum altitude :	2500 m.	
Interface :	15" touch screen.		
	Remote control by a 7" tablet.		
Data :	Force sensors 5 kN. Hearth rate controller : POLAR H7 Bluetooth.		
Communication :	RS-232. Ethernet.		
Security :	2 emergency stop, category 3.		
	Emergency stop by weight increasing, fixed to the hanging bar (hanging bar option).		
Certifications :	Materiel compliant with the CE standards.		
	Machine Directive 2006/42/CE.		
	MDD - Directive 93/42/EEC, class 1.		
Noise level :	> 72 dB.		
Warranty :	2 years.		



Medical Development authorized retailer stamp



MEDICAL DEVELOPPEMENT

A Group C-INVEST society - SARL with a capital of 2 568 000 €

17 Z.A. du pré de l'Orme
38760 Varcès Allières et Risset (Isère, France)

phone : +33 (0)4 76 99 08 80
fax : +33 (0)4 76 98 22 13
mail : contact@medical-developpement.com
web site : www.medical-developpement.com

SARL with a capital of 100 000 €

SIRET 799 227 152 00011 - NAF 3230Z - VAT : FR63 799 227 152

